



Kenton C. Ward, CFM
Surveyor of Hamilton County
Phone (317) 776-8495
Fax (317) 776-9628

Suite 188
One Hamilton County Square
Noblesville, Indiana 46060-2230

Map Correction-Field Verification

Drain Number: 311

Drain Length: n/a

Drain Name: Village at Towne Point

Change + / - : n/a

Date: November 1, 2012

New Length: n/a

Verified By: SAB

Notes & Sketch: See attached notes and map. *WO-2012-00206*

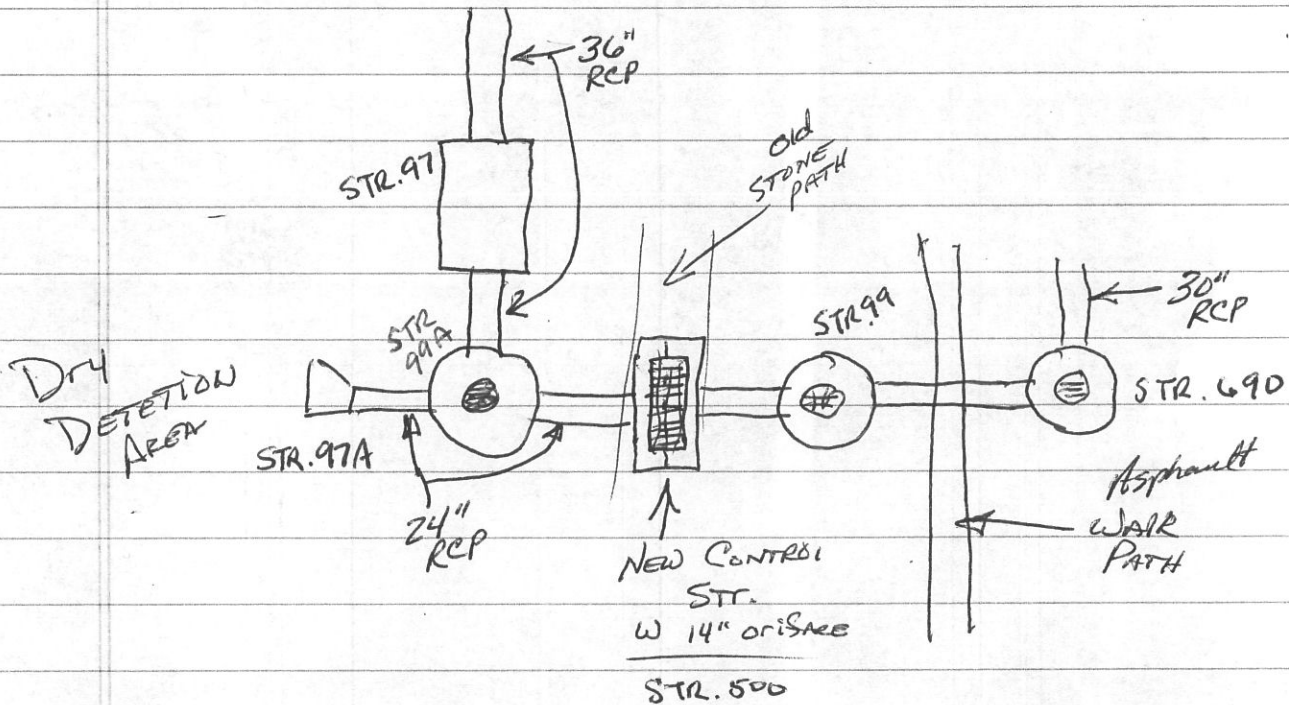
Orifice structure was set on the 24" RCP between existing structures 99 and 99A.

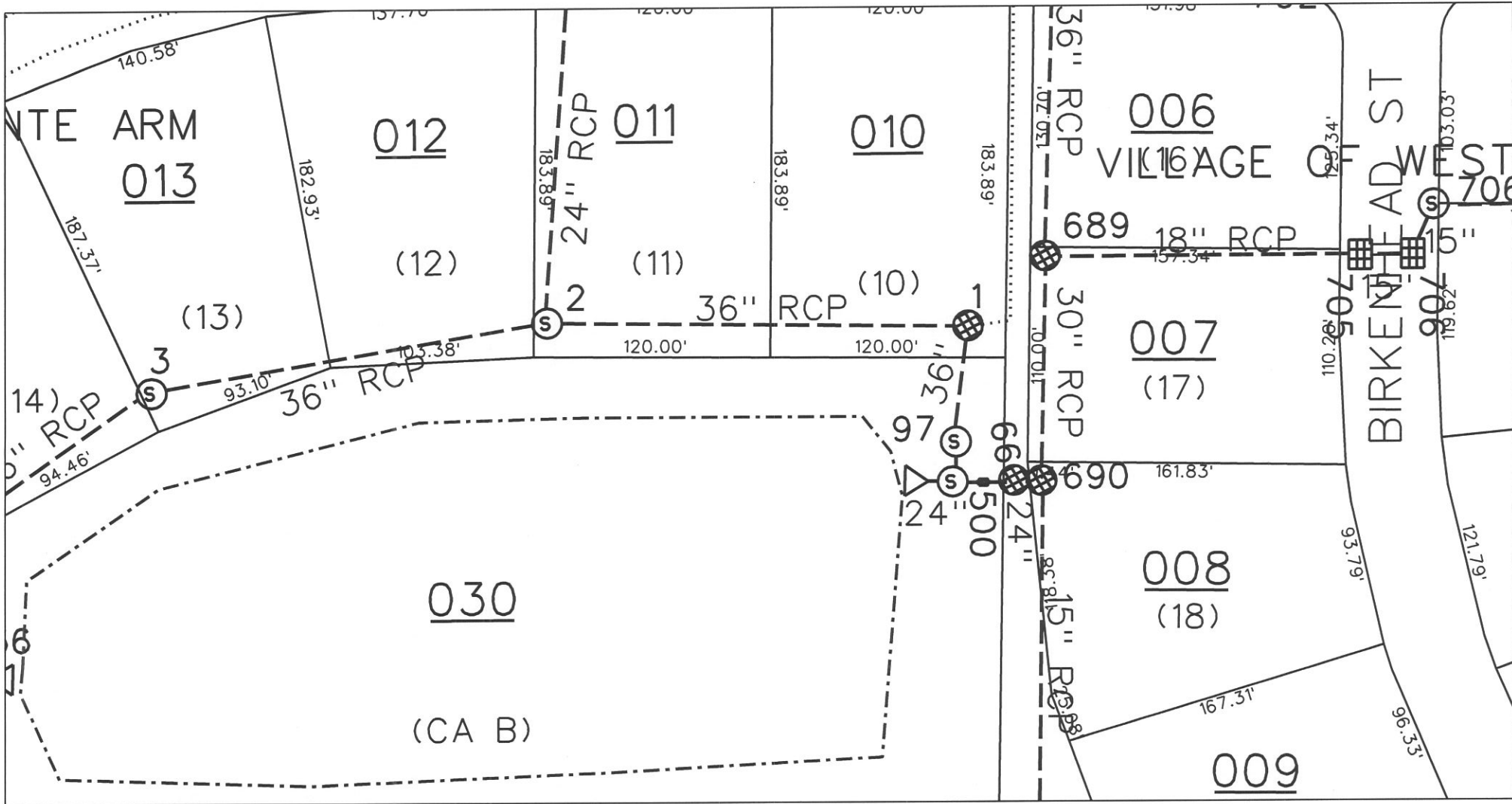
Suzanne L. Mills
GIS Specialist

Elliott Creek/Village @ Toxone Point # 311

WFO - 2012-00206 - Elevation Excavation
Str. set. 10-1-2012

2'x3' Box set with 14" orifice in baffle





sub_rg_drn.dgn 10/31/2012 4:24:23 PM